

ReneSola

Renesola Triangle Solar Racking System

Renesola Triangle Solar Racking System is a high efficient and flexible products for tilt installation of PV modules on flat roofs or other kinds of flat structures. Combining with the other additional parts, the system can be easily applied on flat tin roofs or flat concrete roofs. With the clever design, the Triangle structure can be folded perfectly during transportation and unfolded quickly during the installation on site. Saving you lots of time and money, Renesola Triangle solar Racking System can be your best choice for economy and safety.



Handy Installation:

Thanks to the clever design and strict quality control, the products can be unfolded to the right angle very quickly, making the installation much more efficient.



Extensive Flexibility:

This System is compatible with any sizes of framed modules on the market, especially with Renesola's modules and micro-inverter.



Great Durability:

All the parts are made of high quality stainless steel and aluminum with anodized finish which are great at corrosion resistance and can provide durable service life in outdoor environment.



Excellent Adaptability:

Combining with the other additional parts or adapters, the products can easily be applied onto cement or metal sheet flat roofs.



10 Years Warranty:

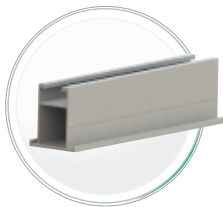
Renesola provides 10 years warranty for the material and workmanship.



Specifications

Installation site	Flat tin roof	Module type	Framed with any sizes
Roof slope	0°-10°	Module layout	Portrait
Roof cladding	Cement, metal sheets	Materials	Stainless steel and Anodized Alu.
Building height	Up to 20m	Standards	AS/NZS 1170, MCS012
Max wind speed	60 m/s	Warranty	10 years
Max snow load	1.4 KN/M2	Tile angle:	30° or any other customized angle

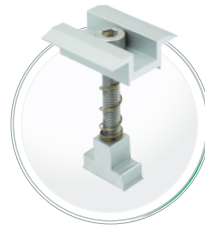




R-T1



SR-T1/200



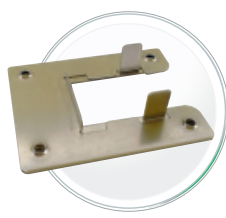
C-SM/H35-45



C-SE



CS-CC/L20



GS-GP/SR



GS-GC/SR



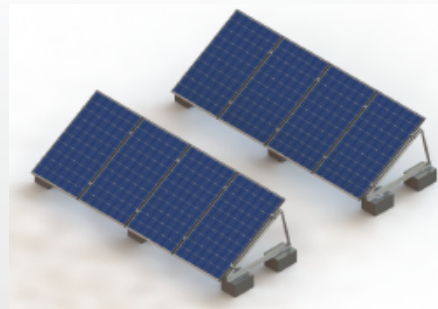
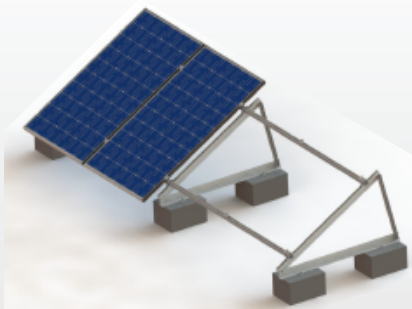
RB-TR angle

Part No.	Part Name	Description
R-T1/length	T-Rail	Supporting modules
SR-T1/200	Splice Group For T-Rail	Connect 2 T-Rail, 200mm length
C-SM/H35-45	Middle Clamp Group (H35-45)	Clamp modules of 35~45mm thickness
C-SE	End Clamp Group	Clamp modules at the end of rows
RB-TR angle	Tripod Group	Pre-assembled and folded aluminium tripod structure, the tile angle can be customized.
CS-CC/L20	Cable Clip	Clamp DC wires onto module's frame(stainless steel)
GS-GP/SR	Grounding Plate I	Conduct the module's frames and rails
GS-GC/SR	Grounding Clip Group	Conduct Rails with copper wires

Note: We provide 3 standard lengths of the T Rail (R-T1): 2100mm, 3200mm, 4200mm. We can also provide any other customized lengths of the rail.

Application Site

- Flat cement roofs, being fixed on the cement blocks by expansion bolts.



- Combining with the suitable adapters or hangerbolts to fix onto the flat tin roofs.

